

Product data sheet

Specifications

SQUARE D

Green Premium™



Load center, Homeline, 1 phase, 20 spaces, 40 circuits, 225A convertible main lugs, PoN, NEMA3R

HOM2040L225PRB

Main

Product Type	Load Center
Marketing Trade Name	Homeline
Load Center Type	PoN Convertible Mains (lugs)
Rated Current	225 A
Number of Spaces	20
Maximum Number of Single Pole Circuits	40
Enclosure Rating	NEMA 3R outdoor
Cover Type	Surface cover
Electrical Connection	Lugs

Complementary

Max Short Circuit Current Rating	10 kA
Maximum Number of Tandem Breakers	20
Number of Phases	1 phase
Voltage Rating	120/240 V AC
Wire Size	AWG 4...250 kcmil copper AWG 4...300 kcmil aluminium
Ground Bar	Grounding bar (ordered separately)
Wiring Configuration	3-wire
Busbar Material	Tin plated aluminium busbar
Enclosure Material	Welded galvanized steel
Surface Finish	Baked enamel Gray
Box Number	6R
Height	29.84 in (758 mm)
Width	14.76 in (375 mm)
Depth	4.53 in (115 mm)

Disclaimer: This documentation is not intended as a substitute for and is not to be used for determining suitability or reliability of these products for specific user applications

Environment

Ambient Air Temperature for Operation 23 °F (-5 °C)
104 °F (40 °C)

Product Certifications UL listed file E-6294

Ordering and shipping details

Category 00145-HOM LC&CVR, 12-42CKT NEMA3R

Discount Schedule DE3C

GTIN 785901977384

Returnability Yes

Country of origin US

Packing Units

Unit Type of Package 1 PCE

Number of Units in Package 1 1

Package 1 Height 5.00 in (12.7 cm)

Package 1 Width 15.70 in (39.878 cm)

Package 1 Length 31.80 in (80.772 cm)

Package 1 Weight 30.65 lb(US) (13.903 kg)

Offer Sustainability

Sustainable offer status Green Premium product

California proposition 65 WARNING: This product can expose you to chemicals including: Lead and lead compounds, which is known to the State of California to cause cancer and birth defects or other reproductive harm. For more information go to www.P65Warnings.ca.gov

REACH Regulation [REACH Declaration](#)

REACH free of SVHC Yes

EU RoHS Directive Compliant
[EU RoHS Declaration](#)

Toxic heavy metal free Yes

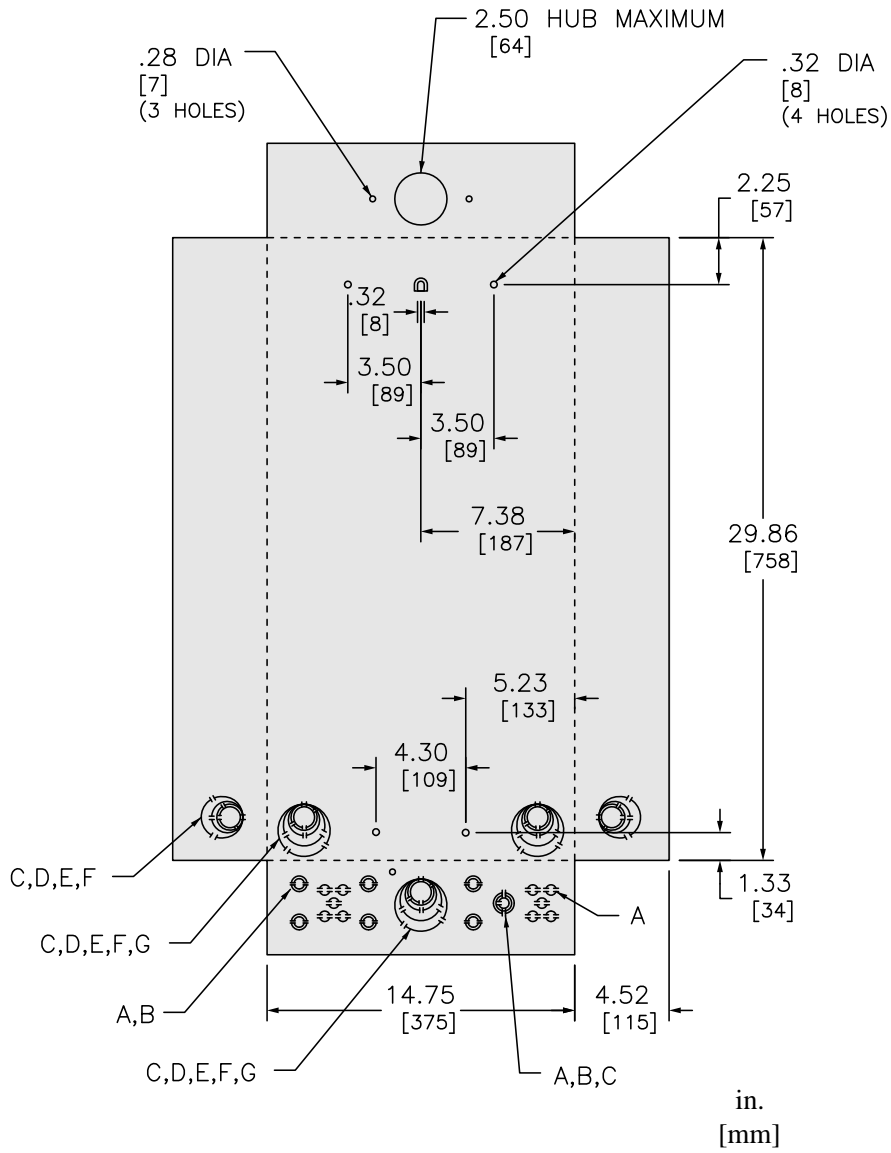
Mercury free Yes

RoHS exemption information [Yes](#)

China RoHS Regulation [China RoHS declaration](#)
Pro-active China RoHS declaration (out of China RoHS legal scope)

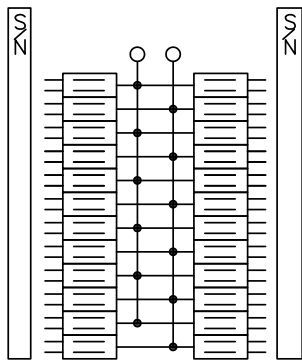
Environmental Disclosure [Product Environmental Profile](#)

Dimensions

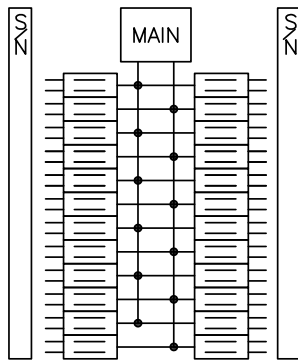


KNOCKOUTS							
SYMBOL	A	B	C	D	E	F	G
IN	.50	.75	1.00	1.25	1.50	2.00	2.50
MM	13	19	25	32	38	51	64

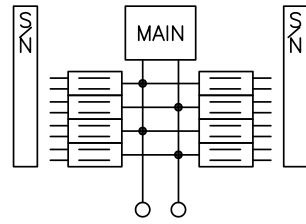
Wiring Diagram



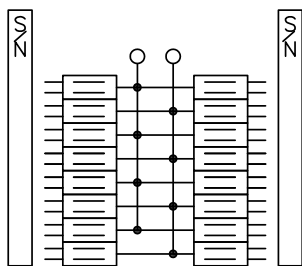
HOM2448L125PRB



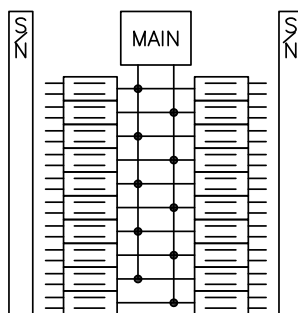
HOM2448M125PRB



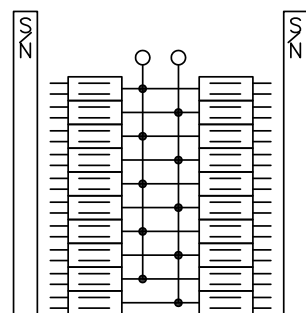
HOM816M150PFTRB
 HOM816M200PFTRB



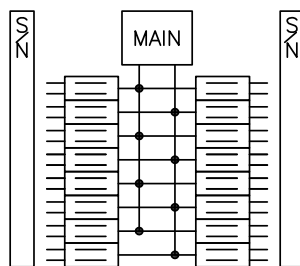
HOM1632L225PRB



HOM2040M200PRB



HOM2040L225PRB



HOM1632M225PRB

Recommended replacement(s)