

Cellular Plug-in with Data Plan for the US

For Commercial Systems:

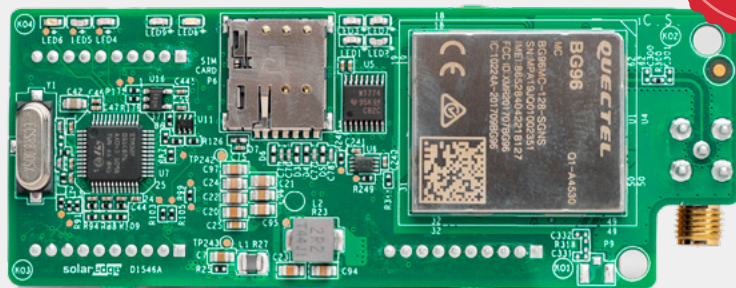
CELL-A-R05-US-S-S4

CELL-A-R05-US-S-S5

And for Residential Systems:

CELL-A-R05-US-S-S2

CELL-A-R12-US-S-S2



5/12
YEAR
WARRANTY

COMMUNICATION

Cellular Internet Connectivity for Commercial and Residential Installations

- // Compatible for inverters with a display
- // Connects SolarEdge inverters wirelessly to the internet
- // No need for internet infrastructure at site
- // Installed within the inverter enclosure for outdoor resilience, or in the communication gateway
- // Supports high bandwidth monitoring of inverters, power optimizers, batteries, meters and weather stations
- // Enables remote analysis and troubleshooting
- // 5-year/12-year data plan is included
- // Comprehensive coverage in the US

/ Cellular Plug-in with Data Plan For The US

CELL-A-R05-US-S-S2, CELL-A-R12-US-S-S2, CELL-A-R05-US-S-S4, CELL-A-R05-US-S-S5

COMPATIBLE INVERTERS		SExxxx-xxxxxNxxx (INVERTERS WITH A DISPLAY)		UNIT
Coverage ⁽¹⁾	Refer to the following link and select the CAT M1 option: https://www.solaredge.com/index.php/us/products/communication/cellular-communication-options#/			
Monitoring	Continuous connection with 5 minute telemetry from all connected inverters			
Supported Residential Systems (CELL-A-R05-US-S-S2/ CELL-A-R12-US-S-S2)	Residential systems: 1 inverter, up to 45 power optimizers, and 1 meter Residential StorEdge systems: 1 inverter connected, up to 30 power optimizers, 2 batteries and 1 meter			
Supported Power of Commercial Systems	Up to 200 (for CELL-A-R05-US-S-S4)	Up to 1000 (for CELL-A-R05-US-S-S5)		kW AC
Number of Monitored Inverters with a single Cellular Plug-in	Commercial: Up to 32 inverters, limited by the system AC size ⁽²⁾ Residential: 1 inverter			
Data Plan Duration	5 or 12 years prepaid plan (depends on R05 or R12 part numbers respectively)			
RF PERFORMANCE		Operating Frequency		
LTE Cat M1 FDD	Freq (MHz) / Band	Modem Transmit / Receive		
	2100 (B1)	1920-1980 / 2110-2170		MHz
	1900 (B2)	1850-1910 / 1930-1990		MHz
	1800 (B3)	1710-1785 / 1805-1880		MHz
	1700 (B4)	1710-1755 / 2110-2155		MHz
	850 (B5)	824-849 / 869-894		MHz
	900 (B8)	880-915 / 925-960		MHz
	700 (B12)	699-716 / 729-746		MHz
	700 (B13)	777-787 / 746-756		MHz
	850 (B18)	815-830 / 860-875		MHz
	850 (B19)	830-845 / 875-890		MHz
	800 (B20)	832-862 / 791-821		MHz
	1900 (B25)	1850-1915 / 1930-1995		MHz
	850 (B26)	814-849 / 859-894		MHz
	700 (B28)	703-748 / 758-803		MHz
LTE Cat M1 TDD	1900 (B39)	1880 / 1920		MHz
Maximum transmit power	23			dBm
Receiver Input Sensitivity Cat M1, 1.4 MHz Bandwidth, CE Mode A	-107			dBm
LTE Cat-M1 bandwidth	1.4			MHz
LTE Cat-M1 modulation	Downlink: OFDMA, 16 QAM Uplink: SC-FDMA, 16 QAM			
ANTENNA				
Dual Antenna Bands	824-960	1710-2170		MHz
Antenna Type	Outdoor			
Antenna Connector	RP-SMA or N plug ⁽³⁾			
VSWR	≤4.0			
Gain	2			dBi
Polarization	Vertical			
Material	PC Lexan 503R-WH5151L or WH8G952 Sabic			
Dimensions (Length x Diameter)	7.87 x 0.78 / 200 x 20			in / mm
STANDARD COMPLIANCE				
EMC and Radio	FCC parts 15, 22, 24 class B; Industry Canada (IC): ICS-003, RSS-102			
Safety	cUL, UL60950			
RoHS	Yes			
INSTALLATION SPECIFICATIONS				
Dimensions (L x W x H)	3.56 x 1.35 x 0.55 / 90.54 x 34.5 x 14.2			in / mm
Operating Temperature	-40 to +85 / -40 to +185			°C / °F
Mounting	Built into the inverter or purchased separately			
Power consumption	1000 (@ 23 dBm output power)			mW
SIM CARD HOLDER				
Type	Nano Sim			

(1) Available only in the US. For 12 year data plans - in the event that third party cellular technology currently used by SolarEdge (LTE Cat-M1) is phased out or becomes otherwise unavailable, SolarEdge shall ship replacement parts such as modem and/or SIM card of a prevailing technology. Upon such replacement, the new prevailing hardware shall continue to be covered for the remainder of the original data plan duration. Customer is responsible for verifying that the region of installation is covered by the LTE Cat-M1 network prior to any installation by accessing: <https://www.solaredge.com/index.php/us/products/communication/cellular-communication-options#/>. SolarEdge shall not be responsible or liable for unavailability or discontinuance of network coverage in a specific area or region or any network downtime

(2) For larger systems, use multiple cellular plug-ins

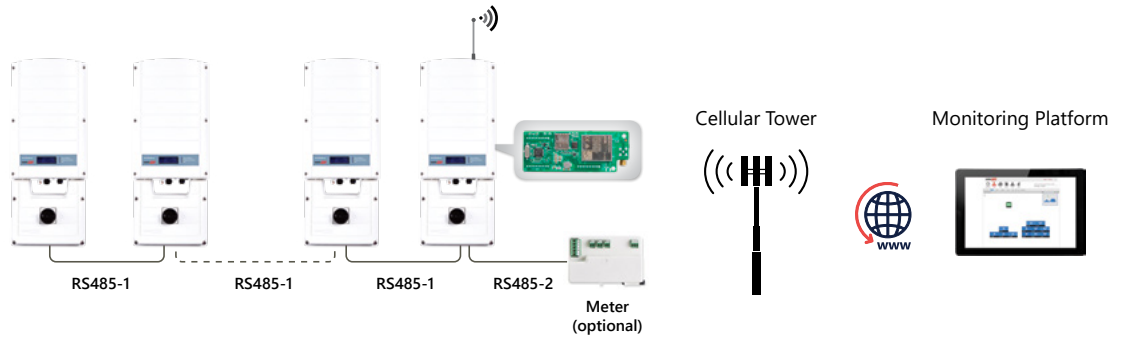
(3) Two types of antennas may be supplied interchangeably

/ Cellular Plug-in with Data Plan

For The US

CELL-A-R05-US-S-S2, CELL-A-R12-US-S-S2, CELL-A-R05-US-S-S4, CELL-A-R05-US-S-S5

Single or Multiple Commercial Inverters



Single or Multiple Residential Inverters

