

XW+

hybrid inverter/charger

One solution for global power needs

Product at a glance

XW+ is an adaptable single-phase and three-phase inverter/charger system with grid-tie functionality and dual AC power inputs. Compatible solar charge controllers, monitoring, and automated generator control modules enable further compatibility. From a single XW+ unit to clusters up to 76.5 kW, the XW+ is a scalable system that allows for the integration of solar capacity as required. Adaptable and scalable, the Schneider Electric XW+ system is a complete solution for grid-interactive and off-grid, residential and commercial, solar and backup power applications.



XW+

Designed for reliability

- Extensive quality and reliability testing
- Highly accelerated life testing
- Globally proven and recognized field performance

Flexible

- Single or three-phase off-grid systems from 7.0 kW to 76.5 kW (30 minutes rating at 25 °C)
- Supports DC-coupled and AC-coupled off-grid and grid-tie architectures
- Supports charging of lithium ion battery packs

Easy to service

- Monitor, troubleshoot, or upgrade firmware with Insight

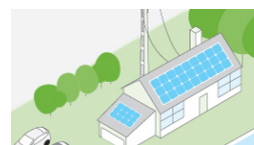
Easy to install

- System configures quickly into compact, wall-mounted system
- Integrates both grid and generator power with dual AC inputs
- Balance-of-system components integrates battery bank, solar charge controllers, and generators
- Commission the entire system with PC software tool and Insight

Product application



Residential grid-tie solar with backup power



Self-consumption



Off-grid solar



Backup power



Community electrification

XW+ series (120/240 V)

| Device short name | XW+ 5548 NA (Discontinued) | XW+ 6848 NA |
|---|---|--|
| Inverter AC output (standalone) | | |
| Output power (continuous) at 25°C | 5500 W | 6800 W |
| Overload 30 min/60 sec at 25°C | 7000 W/9500 W | 8500 W/12000 W |
| Output power (continuous) at 40°C | 4500 W | 6000 W |
| Maximum output current 60 seconds (rms) | 82 A (120 V); 41 A (240 V) | 102 A (120 V); 52 A (240 V) |
| Output frequency (selectable) | 50/60 Hz | 50/60 Hz |
| Output voltage | L-N: 120 V +/- 3%; L-L: 240 V +/- 3% | L-N: 120 V +/- 3%; L-L: 240 V +/- 3% |
| Total harmonic distortion at rated power | < 5 % | < 5 % |
| Idle consumption search mode | < 8 W | < 8 W |
| Input DC voltage range | 42 to 60 V (48 V nominal) | 42 to 60 V (48 V nominal) |
| Maximum input DC current | 150 A | 180 A |
| Charger DC output | | |
| Maximum output charge current | 110 A | 140 A |
| Output charge voltage range | 40 – 64 V (48 V nominal) | 40 – 64 V (48 V nominal) |
| Charge control | Three stage, two stage, boost, custom | Three stage, two stage, boost, custom |
| Charge temperature compensation | Battery temperature sensor included | Battery temperature sensor included |
| Power factor corrected charging | 0.98 | 0.98 |
| Compatible battery types | Flooded (default), Gel, AGM, Lithium ion, custom* | Flooded (default), Gel, AGM, Lithium ion, custom* |
| Battery bank range (scaled to PV array size) | 440 – 10000 Ah | 440 – 10000 Ah |
| AC input | | |
| AC 1 (grid) input current (selectable limit) | 3 – 60 A (60 A default) | 3 – 60 A (60 A default) |
| AC 2 (generator) input current (selectable limit) | 3 – 60 A (60 A default) | 3 – 60 A (60 A default) |
| Automatic transfer relay rating/typical transfer time | 60 A/8 ms | 60 A/8 ms |
| AC input voltage limits (bypass/charge mode) | L-N: 78 - 140 V (120 V nominal); L-L: 160 - 270 V (240 V nominal) | L-N: 78 - 140 V (120 V nominal); L-L: 160 - 270 V (240 V nominal) |
| AC input frequency range (bypass/charge mode) | 55 – 65 Hz (default) 52 – 68 Hz (allowable) | 55 – 65 Hz (default) 52 – 68 Hz (allowable) |
| AC grid-tie output | | |
| Grid sell current range on AC1(selectable limit) | 0 to 40 A (120 V) / 0 to 20 A (240 V) | 0 to 48 A (120 V) / 0 to 27 A (240 V) |
| Grid sell voltage range on AC1 (auto adjusts entering sell mode) | L-N: 105.5 to 132 +/- 1.5 V; L-L: 211 to 264 +/- 3.0 V | L-N: 105.5 to 132 +/- 1.5 V; L-L: 211 to 264 +/- 3.0 V |
| Grid sell frequency range on AC1 (auto adjust entering sell mode) | 59.4 to 60.4 +/- 0.05 Hz | 59.4 to 60.4 +/- 0.05 Hz |
| Efficiency | | |
| Peak | 95.7% | 95.7% |
| CEC weighted efficiency | 93.0% | 92.5% |
| General specifications | | |
| Part number | 865-5548-01 (Discontinued) | 865-6848-01 |
| Product/shipping weight | 53.5 kg (118.0 lb)/75.0 kg (165.0 lb) | 55.2 kg (121.7 lb)/76.7 kg (169.0 lb) |
| Product dimensions (H x W x D) | 58 x 41 x 23 cm (23 x 16 x 9 in) | 58 x 41 x 23 cm (23 x 16 x 9 in) |
| Shipping dimensions (H x W x D) | 71.1 x 57.2 x 39.4 cm (28.0 x 22.5 x 15.5 in) | 71.1 x 57.2 x 39.4 cm (28.0 x 22.5 x 15.5 in) |
| IP degree of protection | NEMA Type 1 Indoor | |
| Operating air temperature range | -25°C to 70°C (-13°F to 158°F) (power derated above 25°C (77°F)) | |
| Warranty (depending on the country of installation) | Please refer to our website, SEsolar.com for the latest version of the warranty statement. | |
| Features | | |
| System monitoring and network communications | Available | |
| Intelligent features | Grid sell, peak load shave, generator support, prioritized consumption of battery or external DC energy | |
| Auxiliary port | 0 to 12 V, maximum 250 mA DC output, selectable triggers | |
| Off-grid AC coupling | Frequency control | |
| Regulatory approval | | |
| Safety | UL1741, CSA 107.1 | |
| EMC directive | FCC and Industry Canada Class B | |
| Interconnect | IEEE 1547 and CSA 107.1 | |
| Compatible products | | |
| Conext XW+ Mini Power Distribution Panel | 865-1013-01 | |
| Conext XW + Power Distribution Panel | 865-1015-01 | |
| Conext MPPT 60 150 | 865-1030-1 | |
| Conext MPPT 80 600 | 865-1032 | |
| Conext System Control Panel | 865-1050 | |
| Conext Automatic Generator Start | 865-1060 | |
| Conext Battery Monitor | 865-1080-01 | |
| Conext Battery Fuse Combiner Box | 865-1031-01 | |
| Conext Configuration Tool | 865-1155-01 | |

Specifications are subject to change without notice.

Schneider Electric
35 rue Joseph Monier
92500 Rueil-Malmaison, France
Tel: +33 (0)1 41 29 70 00

Life Is On

