



**Power for
the long haul.**

OXBOX™

Energy storage system

**Whatever happens.
Whenever it happens.
Oxbox will pull you through.**

Reliable and robust, Oxbox is ideal for storing energy produced by a solar array, generator or the utility. Use it for emergency backup, cutting utility costs, or to live completely off-grid with the energy you generate and store.



3-4x more powerful than lithium.

A single Oxbox™ delivers 3-4x the amount of power that a single lithium-based unit can. And because of its whopping capacity, Oxbox discharges very little of its total power during a single load cycle. Simply put, our advanced lead-acid batteries are designed for both daily cycling and extended runtime, making Oxbox the optimal choice for solar and home backup applications.

Oxbox is so robust, it can power your whole house far longer than a lithium unit before fully discharging.

Lithium unit



80-100% of a lithium unit's usable energy is discharged in less than a day.

Oxbox



The Oxbox system will still have 70-80% of its capacity after a day's use, enabling 2-3 days of usable energy before needing to be recharged.

The latest in lead-acid.

Packed with valve-regulated lead-acid batteries (VRLA Tubular Plate GEL), Oxbox provides the ideal way to store energy. Because of their special electrode design and fixed gel electrolyte, the batteries built into Oxbox deliver rock-solid, maintenance-free performance, along with an impressive cycle lifetime.

Oxbox is powered by robust BAE Secura PVV Cell Solar Batteries:

- Maintenance-free
- Long lifespan (10 to 15+ years)
- Optimized for cycling
- Proven under extreme conditions in industrial systems



More flexibility means more freedom.

Oxbox gives you truly flexible options on where your unit is placed, what systems you're able to connect it to and how it's used to store and provide you with power. Other systems limit your choices to just what their proprietary components can do.

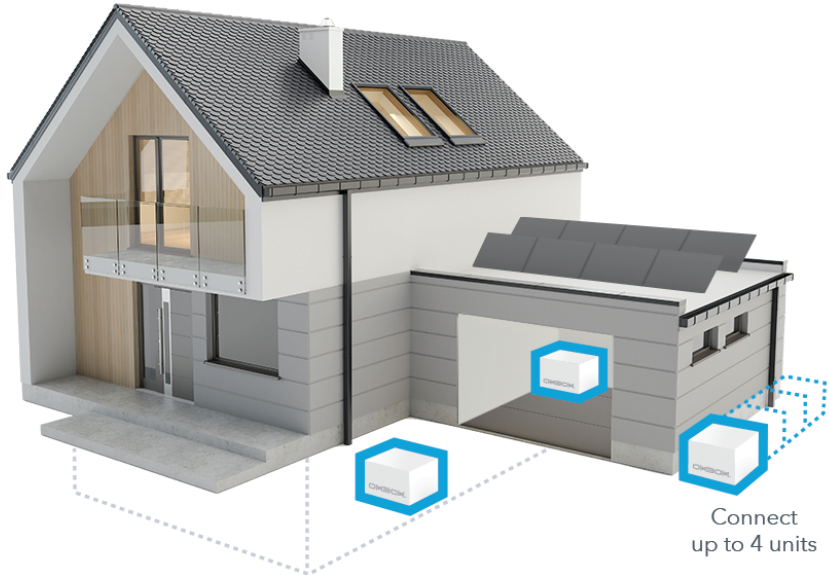
How much power is enough?

The Oxbox ESB-48V-40 model can support most household loads up to 3 days without the need to recharge.

So, while comparable lithium units might deliver enough power for your refrigerator and lights, Oxbox has the capacity to supply virtually everything you normally use. Appliances. Furnace. Lights. Wifi router. Cell phone chargers. TV. DVR/DVD player. Microwave. Coffeemaker. Fans. Well pump. And so on.

If your home has a higher load demand—or you want more than 3 days of backup power—you can connect up to three additional Oxbox units in parallel.

Install Oxbox almost anywhere



Connect Oxbox to almost anything



Solar



Wind



The grid



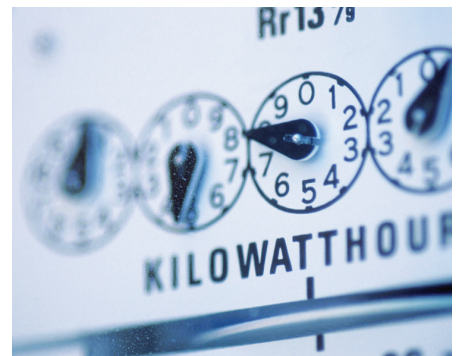
Tough. Tested. Trusted.

Oxbox is safe and reliable. It's the first lead-acid energy storage system to be UL-listed for safety to UL 1973 and UL 9540. Whereas lithium can be unstable and prone to fires and explosions, lead-acid batteries have been proven and perfected over 100 years. Simpler, stronger and safer, they keep getting the job done.



Better for your home and your home planet.

99% of lead-acid batteries are safely recycled (<15% for lithium), making them the most sustainable battery technology. Many recycling centers will pay you for a dead lead-acid battery. Not so with lithium.



Reduce your utility bills.

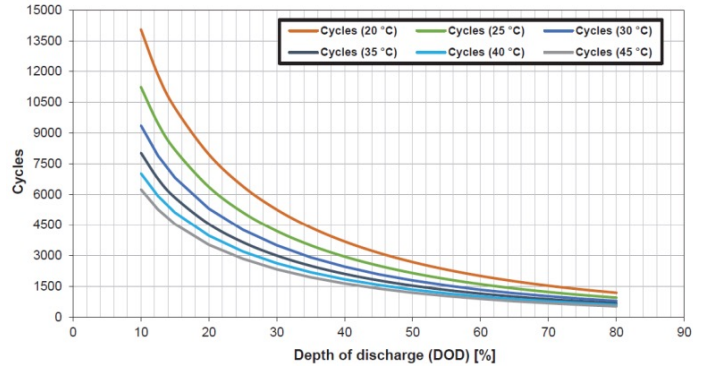
Run your household with Oxbox during costly on-peak times. Plus, because it can store a massive amount of energy, you may be able to sell what you don't need back to your utility.

Years of useful service life in every Oxbox battery.

The service life of any lead-acid battery largely depends on how frequently and deeply its energy is drained. The deeper the discharge, the shorter the lifespan.

Oxbox is designed with such large capacity that it discharges very little of its stored energy over the course of a day's household activities. A single day of backup power, for example, may consume only 20-30% of the batteries' stored energy.

When properly installed, Oxbox's batteries should provide between 2,800 and 5,000 daily cycles if drained to 30%-50% of capacity at 20°C (68° F). That's 10-15 years of calendar life. Of course, if your usage includes a mix of shallow and deeper discharges at moderate temperatures, the calendar life of Oxbox's batteries could approach 20 years.



Oxbox specifications

Model Name	ESB-48V-40 SINGLE UNIT
Battery	BAE Secura PVV Cell Solar 6 PVV 900 (2V 968Ah)
Nominal Voltage	48VDC
Capacity, C20 to 1.80 VPC, 20°C	834Ah/40kWh
Capacity, C72 to 1.80 VPC, 20°C	943Ah/45kWh
Capacity, C120 to 1.80 VPC, 20°C	978Ah/47kWh
Type of Battery	VRLA Gelled Electrolyte
Cycle Life	2,800 Cycles to 50% DOD
Operating Temperature Range	-20°C to 50°C
Enclosure Type	NEMA 3R
Ingress Rating	IP23
Seismic Rating	SDS=2.0g (ground level), SDC=D
Installation Location	Indoor/Outdoor
Enclosure Material	Aluminum, White Powder Coated
Enclosure Dimensions	45.6" L x 45.8" W x 34.0" H
Total Weight	3,000 lbs.
Maximum Current	250A (limited by circuit breaker)
Operating Voltage Range, 20°C	43.2VDC to 57.6VDC
Certifications	UL 1989/UL 1973 / UL 9540
Warranty	10-year

All about the box.

- Rugged, corrosion-resistant powder-coated aluminum
- Designed for exterior use but may be installed inside a home
- Includes a 250 amp disconnect on the exterior
- Main enclosure and disconnect box may be padlocked
- Side louvers for ventilation
- Removable side panel for easy installation
- Hinged lid with a support for easy servicing
- 2" conduit hole (2.5" O.D.) to accommodate input wiring (wiring and conduit not included).



© 2022 BAE Batteries USA



Oxbox is a product of BAE Batteries USA.
info@oxboxenergy.com
 (715) 247-2262

oxboxenergy.com
 484 County Road VV
 Somerset, WI 54025 USA