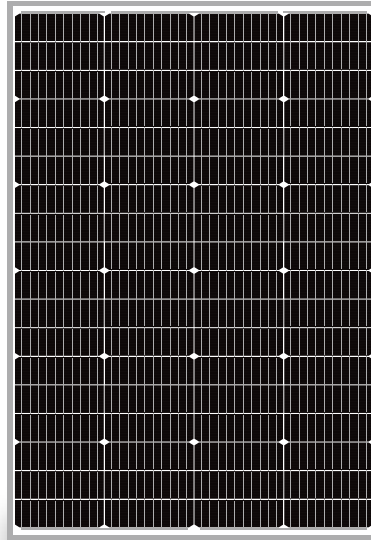




ST-160Q-24CID2-QC

High Efficiency Monocrystalline PV Module

- Nominal 24V DC for standard output.
- Outstanding low-light performance.
- Heavy-duty anodized frames.
- High transparent low-iron, tempered glass.
- Designed to withstand high wind pressures, hail and heavy snow.
- Quality aesthetic appearance.



272637
CLASS I, DIVISION 2,
GROUPS A, B, C AND D



10 years

Product Warranty

25 years

Power Warranty



Industry Compliant

This CID2-rated solar panel is suitable for industries that are at risk of gas explosions, meeting NFPA and NEC safety standards



Enhanced Safety

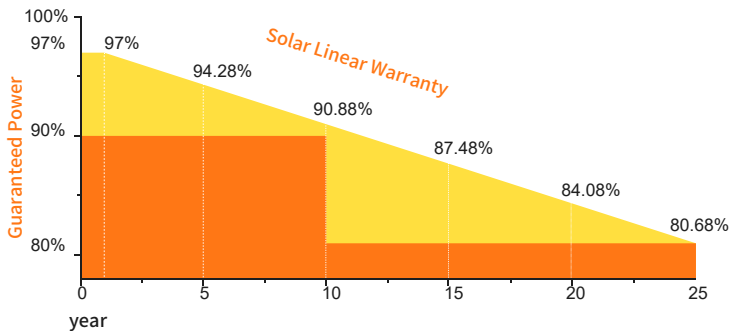
Equipped with specialized design elements, minimizing risk of ignition in hazardous environments, further adhering to CID2 certification standards



Mechanical Robustness & Reliability

Engineered for durability and reliability, capable of operating efficiently even in volatile and hazardous conditions, where safety and efficiency matter most

Performance Warranty



Wind Load/Snow Load:
2400pa/5400pa

Positive Power Tolerance :
3%

Warranty Information :
10 Year Product Workmanship

Specifications

| | |
|-------------------------------------|---|
| Cells | Monocrystalline silicon solar cell |
| No. of cells and connections | 72(4x18) |
| Module dimension | 43.5in.x30.12in.x1.38in. [1105mmx765mmx35mm] |
| Weight | 20.71lbs[9.40kg] |

Rating Characteristics

| | |
|------------------------------------|----------------------|
| Operating temperature | -40°C to 65°C |
| Maximum system voltage | 600V DC |
| Power tolerance | 0~± 3% |
| Module Fire Performance | Type 1 (for US) |
| Fire Resistance Rating | Class C (For Canada) |
| PV module application class | Class A |
| Temperature code rating | T3C |

*NOCT:Nominal operating cell temperature (the data is only for reference)

Electrical Characteristics

| | |
|-----------------------------|-------------------|
| Module Type | ST-160Q-24CID2-QC |
| Maximum power (Pmax) | 160W |
| Voltage at Pmax (Vmp) | 40.73V |
| Current at Pmax (Imp) | 3.93A |
| Open-circuit voltage (Voc) | 47.16V |
| Short-circuit current (Isc) | 4.13A |
| Module Efficiency | 22.2% |

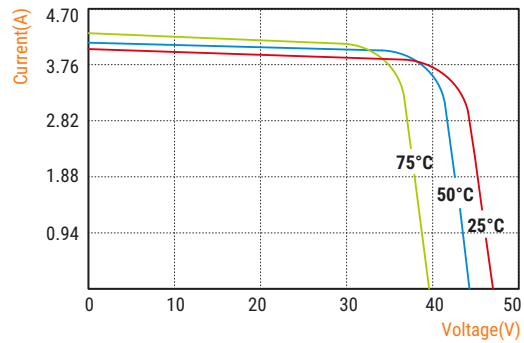
*STC: Irradiance 1000W/m², AM1.5 spectrum, module temperature 25°C

Temperature Characteristics

| | |
|---|-------------------|
| Temperature coefficient of Voc | -(80±10)mV/°C |
| Temperature coefficient of Isc | (0.065±0.015)%/°C |
| Temperature coefficient of power | -(0.5±0.05)%/°C |
| NOCT (Air 20°C; Sun 0.8kW/m ² wind 1m/s) | 47±2°C |

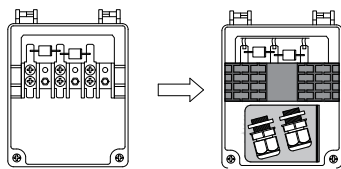
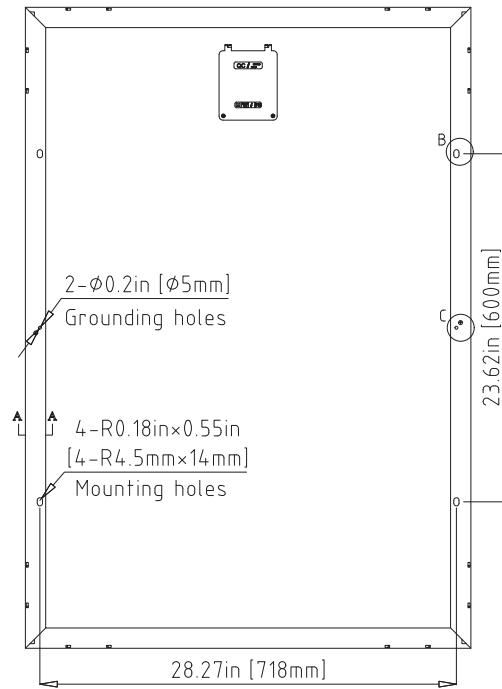
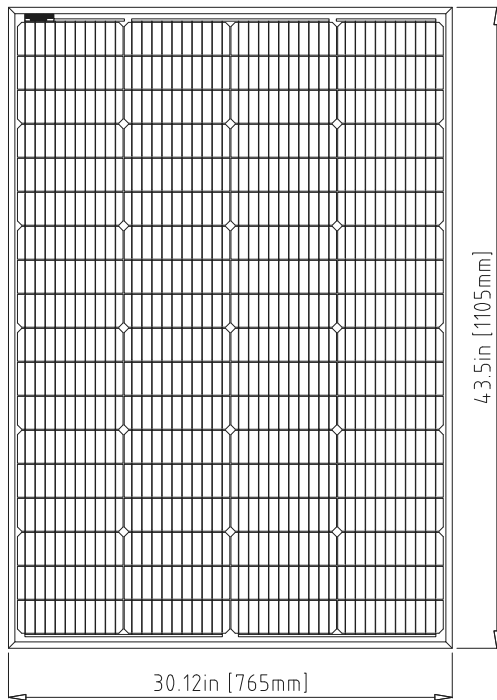
I-V Curves (STC)

ST-160Q-24CID2-QC

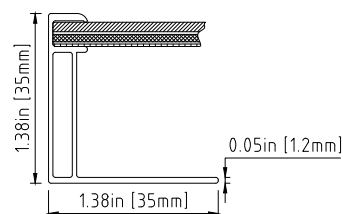


Mechanical Diagrams

ST-160Q-24CID2-QC



Junction Box
Top View (Lid Open)



Section A-A