

17524

17525, 17526, 17527, 17528, 17529

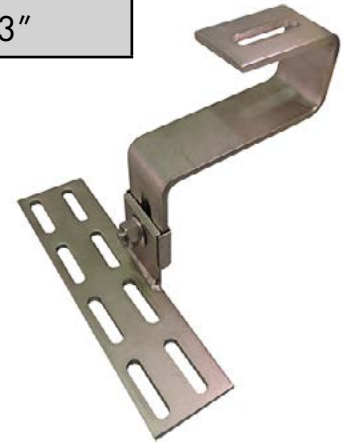
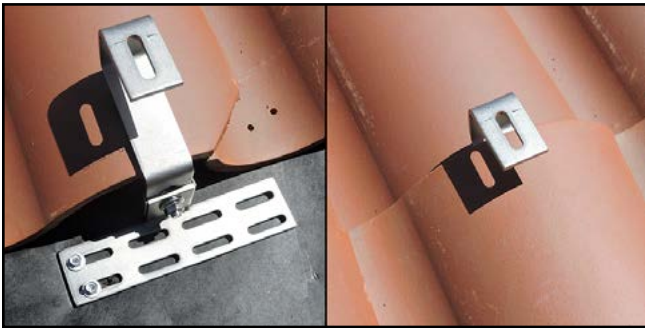
CURVED TILE ROOF HOOK FOR BOTTOM MOUNT RAILS; ADJUSTABLE



A DIVISION OF QUICKSCREWS INTERNATIONAL CORP

SPEC SHEET

Part #	Box Quantity	Screw Size
17524	10 Hooks	N/A
17525	1 Hook	N/A
17526	10 Hooks; 20 Screws	#14 x 3"
17527	1 Hook; 2 Screws	#14 x 3"
17528	10 Hooks; 20 Screws	5/16" x 3"
17529	1 Hook; 2 Screws	5/16" x 3"



Letter	Description	Size/Length
A	Mounting Screw Slot	9mm x 37mm
B	Rail Slot Size	10mm x 38mm
C	Length of Roof Hook	161.60mm
D	Bottom End to Top End	126.20mm - 148mm
E	Thickness	5mm
F	Adjustability Range	69mm - 91mm

