

17516

17517, 17518, 17519

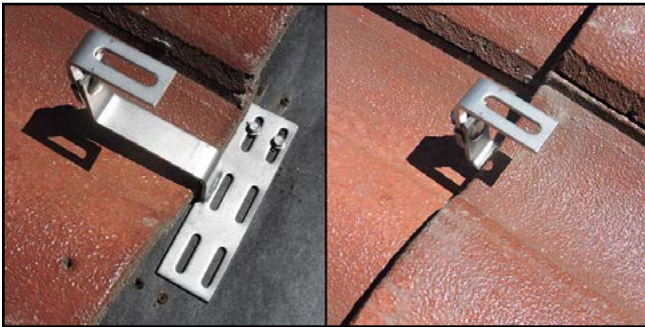
CURVED TILE ROOF HOOK FOR BOTTOM MOUNT RAILS; TOP ADJUSTABLE



A DIVISION OF QUICKSCREWS INTERNATIONAL CORP

SPEC SHEET

Part #	Box Quantity	Screw Size
17516	10 Hooks	N/A
17517	1 Hook	N/A
17518	10 Hooks; 20 Screws	#14 x 3"
17519	1 Hook; 2 Screws	#14 x 3"



Letter	Description	Size/Length
A	Mounting Screw Slot	7.50mm x 37mm
B	Rail Slot Size	10mm x 46mm
C	Length of Roof Hook	145mm
D	Bottom End to Top End	129.50mm
E	Thickness	5mm
F	Adjustability Range	10.5mm - 139mm

