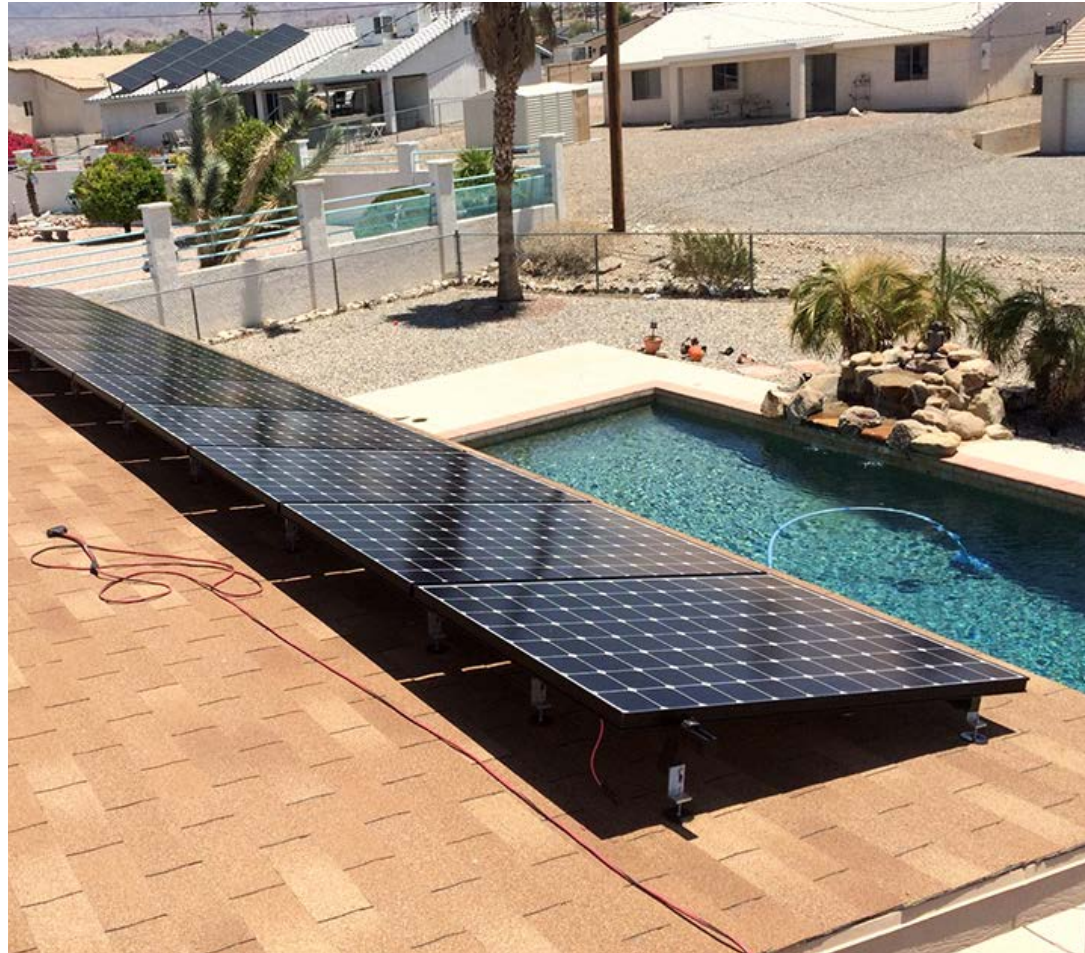


16324

16323, 16325, 16326

CONDUIT PUCK™ KIT FOR ASPHALT SHINGLE ROOFS



A DIVISION OF QUICKSCREWS INTERNATIONAL CORP

INSTALL INSTRUCTIONS



RECOMMENDED MATERIALS

- Impact Driver or Drill
- 7/16th Hex Driver

INSTALLATION INSTRUCTIONS

1. Open Conduit Clip slightly
2. Place screw through base hole
3. Thread screw with Clip into Puck hold. Just enough so it doesn't fall out
4. Orient clip to conduit direction
5. Use 7/16th screw driver to fasten
6. Thread bolt through clip's top hole. Clip hole is threaded

