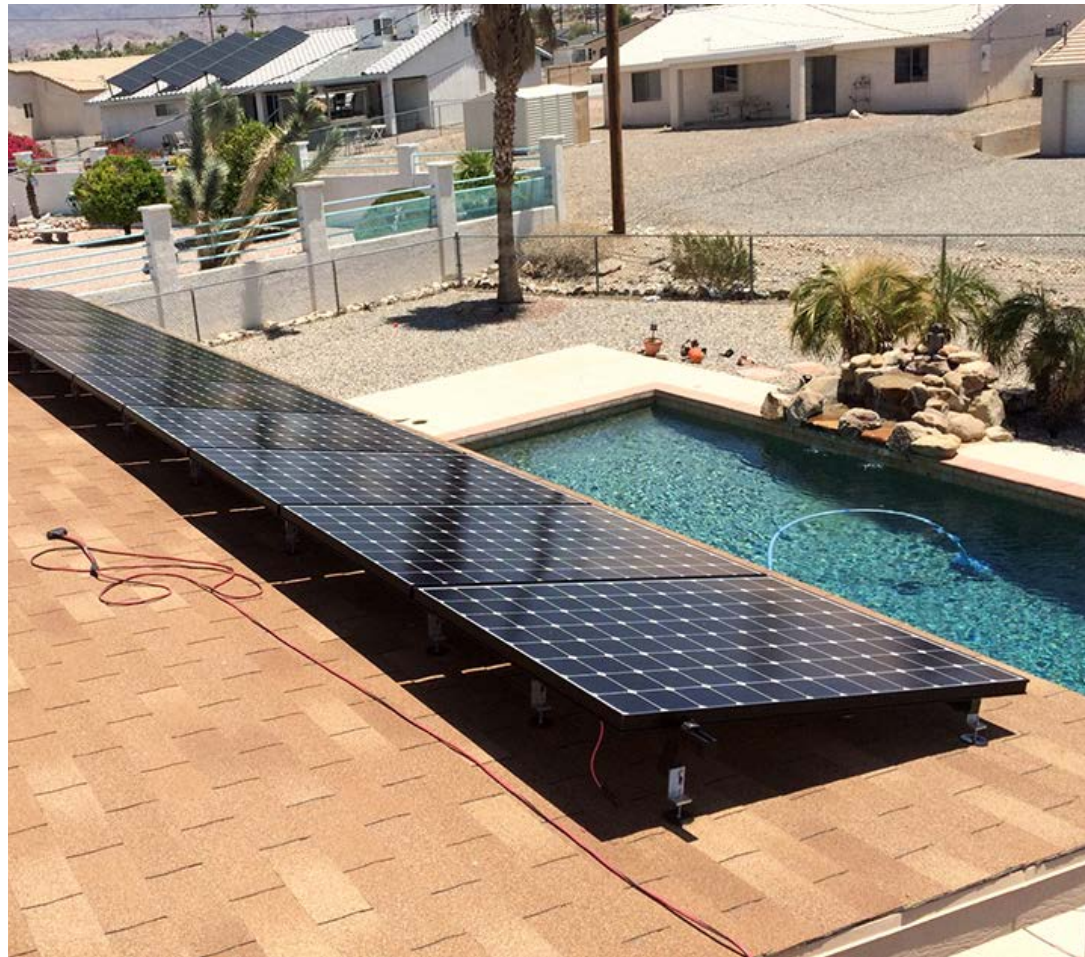


16320

BUTYL BOTTOM BLACK DECK MOUNT FOR ASPHALT, EPDM, & TPO ROOFS



A DIVISION OF QUICKSCREWS INTERNATIONAL CORP

INSTALL INSTRUCTIONS



BUTYL BOTTOM DECK MOUNT (16320)

RECOMMENDED MATERIALS

- 1/2" Nut Setter

INSTALLATION INSTRUCTIONS

The Butyl Deck Mount may be installed directly to the roof deck or into rafters. Ensure you have the proper design and engineering to support your installation type.

1. Remove paper backing from bottom of T-Foot
2. Place T-Foot on roof and press firmly into place
3. Insert first 5/16 X 2 1/2" Hex Lag into T-Foot and drive the screw until the washer is compressed
4. Repeat with remaining screws

When performing a deck mounting installation, there's a small chance that even with accurate roof inspection, installers might hit a rafter with the Butyl Deck Mount lag bolts. A primary indicator is increased resistance or tension on the drill. If this happens:

1. Back out the lag bolt
2. Drill a pilot hole
3. Redrive the bolt
4. Continue with the installation, being aware of rafter direction and alignment to prevent further incidents

When performing a rafter installation with the included lag bolts, installers must predrill pilot holes into the rafter.

* To Drive Screws and Set Umbrella Washers Properly
Torque PSI should not Exceed 57 Lbs/Inch